



2



1



2



C



Description

Robert Luff & Co are delighted to present to the lettings market this beautifully presented two-bedroom garden apartment in the heart of Hove.

Ideally located on Blatchington Road, the property is within easy walking distance of Hove mainline station, George Street shopping thoroughfare, and Church Road with its wide selection of bars and restaurants. Hove seafront is also close by, with regular bus services providing convenient access into Brighton City Centre.

The accommodation comprises a modern fitted kitchen, a spacious living room, two double bedrooms, and two bathrooms. Additional benefits include a private paved rear garden, offering an ideal outdoor space.



Key Features

- Beautifully presented two-bedroom garden apartment
- Spacious accommodation
- Two double bedrooms
- Private paved rear garden
- Prime location on Blatchington Road
- Modern fitted kitchen and bright living room
- EPC energy rating C (78)
- Excellent access to seafront and transport links



robertluff.co.uk

30 Guildbourne Centre, Worthing, West Sussex, BN11 1LZ | 01903 331247 | info@robertluff.co.uk

Robert
Luff & Co



Entrance Hall

Kitchen

3.99m x 2.01m (13'1 x 6'7)

Living Room

3.40m x 3.20m (11'2 x 10'6)

Bedroom One

3.81m x 3.58m (12'6 x 11'9)

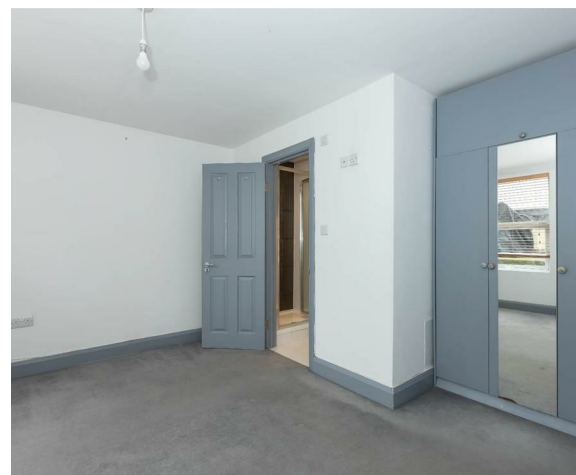
En-Suite Shower Room

Bedroom Two

3.99m x 2.64m (13'1 x 8'8)

Bathroom

Private Rear Garden





robertluff.co.uk

30 Guildbourne Centre, Worthing, West Sussex, BN11 1LZ | 01903 331247 | info@robertluff.co.uk

Robert
Luff & Co



robertluff.co.uk

30 Guildbourne Centre, Worthing, West Sussex, BN11 1LZ | 01903 331247 | info@robertluff.co.uk

Robert
Luff & Co

